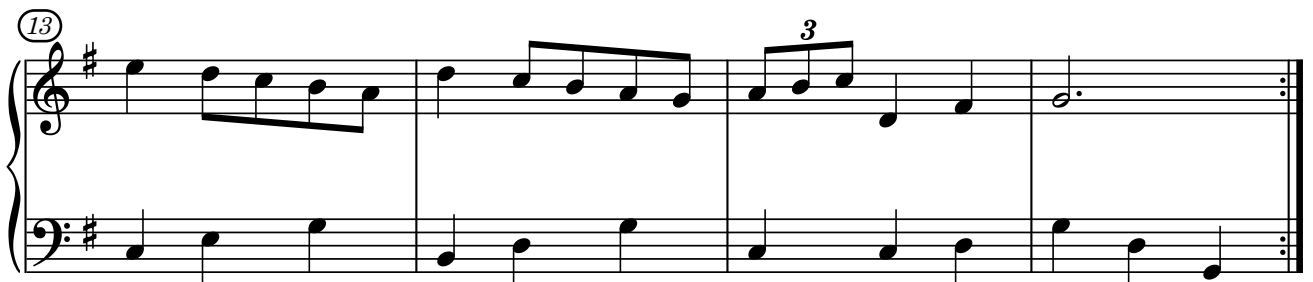
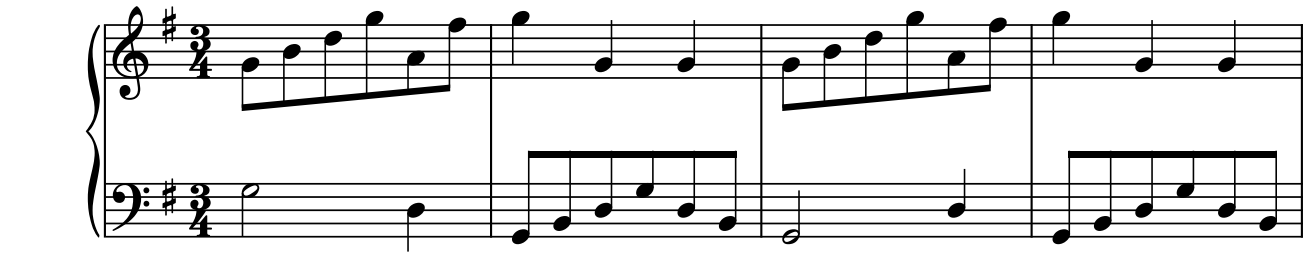


# Minuetto in G

*Dal libro per Anna Magdalena*

*J.S.Bach*



17

System 17-21: Treble and bass staves in G major. Treble staff: 17: quarter notes G4, A4, B4, C5; 18: quarter notes B4, A4, G4, F#4; 19: eighth notes G4, A4, B4, C5, D5, E5, F#5, G5; 20: quarter notes G4, F#4, E4, D4; 21: eighth notes G4, A4, B4, C5, D5, E5, F#5, G5. Bass staff: 17: quarter notes G2, A2, B2, C3; 18: quarter notes B2, A2, G2, F#2; 19: quarter notes G2, A2, B2, C3; 20: quarter notes G2, A2, B2, C3; 21: eighth notes G2, A2, B2, C3, D3, E3, F#3, G3.

22

System 22-26: Treble and bass staves in G major. Treble staff: 22: quarter notes G4, A4, B4, C5; 23: eighth notes G4, A4, B4, C5, D5, E5, F#5, G5 (triple); 24: quarter notes G4, F#4, E4, D4; 25: eighth notes G4, A4, B4, C5, D5, E5, F#5, G5; 26: eighth notes G4, A4, B4, C5, D5, E5, F#5, G5. Bass staff: 22: quarter notes G2, A2, B2, C3; 23: quarter notes B2, A2, G2, F#2; 24: half note G2; 25: quarter notes G2, A2, B2, C3; 26: quarter notes G2, A2, B2, C3.

27

System 27-31: Treble and bass staves in G major. Treble staff: 27: quarter notes G4, A4, B4, C5; 28: quarter notes B4, A4, G4, F#4; 29: quarter notes G4, A4, B4, C5; 30: quarter notes B4, A4, G4, F#4; 31: eighth notes G4, A4, B4, C5, D5, E5, F#5, G5. Bass staff: 27: quarter notes G2, A2, B2, C3; 28: quarter notes B2, A2, G2, F#2; 29: eighth notes G2, A2, B2, C3, D3, E3, F#3, G3; 30: eighth notes G2, A2, B2, C3, D3, E3, F#3, G3; 31: quarter notes G2, A2, B2, C3.

32

System 32-35: Treble and bass staves in G major. Treble staff: 32: half note G4; 33: eighth notes G4, A4, B4, C5, D5, E5, F#5, G5; 34: quarter notes G4, A4, B4, C5; 35: eighth notes G4, A4, B4, C5, D5, E5, F#5, G5. Bass staff: 32: eighth notes G2, A2, B2, C3, D3, E3, F#3, G3; 33: half note G2; 34: eighth notes G2, A2, B2, C3, D3, E3, F#3, G3; 35: half note G2.

36

System 36-40: Treble and bass staves in G major. Treble staff: 36: quarter notes G4, A4, B4, C5; 37: eighth notes G4, A4, B4, C5, D5, E5, F#5, G5; 38: eighth notes G4, A4, B4, C5, D5, E5, F#5, G5; 39: eighth notes G4, A4, B4, C5, D5, E5, F#5, G5 (triple); 40: half note G4. Bass staff: 36: eighth notes G2, A2, B2, C3, D3, E3, F#3, G3; 37: quarter notes G2, A2, B2, C3; 38: quarter notes G2, A2, B2, C3; 39: half note G2; 40: quarter notes G2, A2, B2, C3.